

**Moore
County
Wildlife
Conservation
Club**



RANGE ORIENTATION & SAFETY BRIEF



**GUN
Safety**

Moore County Wildlife Conservation Club

About Us

We are a Moore County based conservation club focused on the education of youth and adults in the preservation of man's gift from God, our fields and forests, our fish and wildlife, and our freedom to go afield with rod or gun to enjoy the great outdoors.

- The MCWCC was established in 1920 by Richard Tufts, a member of Tufts family, as an amenity to the Holly Inn.
- In 1950, Dr. Grier and Cornelia Vam of the Tufts group re-established the club as it exists today open to all ladies and gentlemen who want to participate in the shooting sports and who have an interest in nature and wildlife.
- Today our facilities offer our members daily opportunities to shoot skeet, rifle and pistols, as well as go fishing, practice archery or just enjoy nature.
- We offer Hunter and Boater safety education programs, and professional firearms and gun safety courses throughout the year. Our members can also compete in various competitive matches held at the club each month.

Range Hours of Operation

- All shooting ranges are open everyday from dawn until dusk.
- On Sundays there is no shooting **Center fire ammunition** before 1 p.m.



Club Meetings

- BOD Meetings are on the 2nd Monday of the month
- Our monthly membership meeting is held on the 3rd Tuesday of every month
 - Our membership meetings are Pot Luck Dinners, so bring a dish if you can
 - Every month we have a great guest speaker
- Every Tuesday and Thursday our National Championship Youth Air Rifle Team meets to practice – These kids are Amazing!
- Check the online Club Calendar for the latest events and activities

robertsimmonds
2020-01-07 23:46:43

Not sure what this slide has to do with the Range and Safety Orientation.

Delete slide



Our Facilities

- Members can fish our “Catch and Release” stocked lake anytime
- Camping and Stargazing are allowed in certain areas, please contact any BOD member for additional information
- If you want to reserve the Clubhouse, first check the online calendar for availability. If it is available then send an email to webmaster.mcwcc@gmail.com Scheduling is done on a first come bases.
- Please visit our webpage calendar for the most up to date list of club events and activities – WWW.MCWCC.ORG

robertsimmonds

2020-01-07 23:47:29

Purpose of this slide, delete slide.



Our Facilities

- The clubhouse is accessible to all members anytime.
- The clubhouse has Wi-Fi, two computers, a printer, as well as a big screen TV, all of which can be used by any member. Please remember the computers and printer are not part of your home office or business.
- Members who decide to use the club Wi-Fi, do so at their own risk. We are not responsible for your end device security, patches, updates, filters, anti virus, malware, or rootkit protection because that is your responsibility.
- You can use the clubhouse kitchen anytime, just remember to clean up after yourself.
- If your caught using our facilities or assets to engage in any illegal activities, you will instantly lose your membership.



Administrative Rules

Your ID Badge is your “Key” to get in. If you can remember your gun, you can remember your ID badge!

- All Members must badge In and Out of the facility, even if the gate is open.
- Members are required to wear their ID badge at all times.
- ID badges must be worn in plain site so anyone can clearly see it.
- If your caught letting people use your ID badge, your membership will be revoked.
- You are required to notify a Board member immediately if you lose your badge.
- The fee to replace a lost badge is \$25



Administrative Rules

- Family members and guests under the age of 18, **must be supervised** by a member over the age of 21.
- Members are required to accompany their guests at all times. Your guests are not allowed to be left alone on any range, or area of the property without you being present.
- Members will be held accountable for anything their guests do while using our facilities
- The last member leaving the clubhouse is required to lock it up.
- Ranges can only be reserved for classes, matches, or club sanctioned events.
- Instructors interested in reserving the clubhouse, or any range, need to get advanced approval prior to use for a class. If your class isn't listed on the club calendar, it doesn't exist no matter how many people you have with you.

Administrative Rules

- Members are only authorized to shoot club provided steel targets on our ranges.
- Instructor led classes, matches, and club sanctioned events are the only activities authorized to use non club provided steel targets.
- Members can only shoot approved paper or cardboard targets on MCWCC ranges
- Always center your targets on the target backer whenever possible.
- Do not hang your targets where your going to shoot the vertical or horizontal supports on the target stands. Your goal is to put holes in the target, not our target stands.
- We expect members to always leave their shooting areas clean and neat after each use. Please notify the BOD of anyone who doesn't clean up after shooting



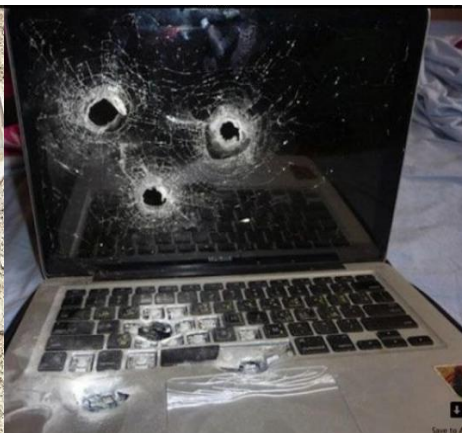
These are examples of club approved paper and cardboard targets

Administrative Rules

- We don't allow the use of targets that are dangerous or harmful to the environment, wildlife, or unsafe to shoot.



These are examples of unauthorized targets. If your caught shooting targets like these examples shown, your privileges will be revoked.



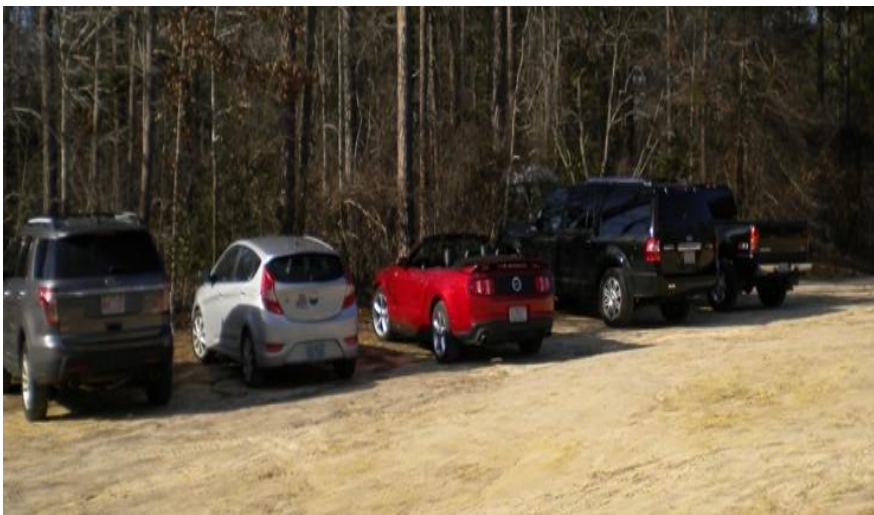
Administrative Rules

- You are required to clean up all of your targets, your brass or shell casings, empty boxes, and any trash you have made before leaving the range.
- If you shoot the target backer to oblivion, then replace it, Don't be that Guy!
- If you need to replace a backer board, we keep the hammers, nails, and backer boards in the 100 yard target shed. You don't need any special permission to replace a backer board, or to use the tools in the shed. They belong to you, the members of the club.
- If your caught leaving the range trashed, your club privileges will be suspended



Administrative Rules

- If you need targets, we have paper targets available for purchase. The targets are located in 100 yard range target shed. Using an honor system, we expect members to leave the appropriate money for the quantity of targets taken.
- The target money goes in the money box located next to the targets in the shed.
- The speed limit for the entire facility 10 mph.
- Please be considerate of other members when parking at the ranges, by parking nose or trunk in to all parking spaces as seen below. Don't park sideways!
- Remember we have members and guests that are disabled. Do not park in handicap parking unless you have a handicap sticker.



Administrative Rules

- As a conservation club we always encourage members to car pool with your guests, and family members whenever possible. Creating a lower carbon foot print is good!
- Members are expected to be stewards of the club. This means we expect all members to be respectful to other members and guests, to respect club property including our forests, streams, lake, and the wildlife in them. If your ever caught dumping, or throwing garbage in the woods your membership will be revoked.
- Members are required to attend at least 4 club events per year. Club events include maintenance days, assisting with matches, helping with the youth programs, etc. Helping during Club maintenance days benefits all members and goes a long way for all.



General Range Rules

- Know and obey the Four Universal Laws of Gun Safety
- Know and Obey all posted Range Rules
- Eye and Ear protection is required to be worn by all members and their guests whenever you are on any rifle or pistol range.
- Members are required to review all Range Rules with their guests. Your guests are required to know and follow our rules. Ignorance leads to accidents!
- Never give another member, or guest a gun to shoot that they can't safely operate, or control. Safety always comes first!
- All shooting must take place from a common firing line.
- All MCWCC ranges operate as "Cold" ranges. This means all loading and unloading of ammunition into your guns will happen on the firing line only.
- There is absolutely no handling or touching of any guns when someone is forward of the firing line, or when the line is declared "Cold" or "Safe" Your guests are required to know and understand this rule!
- Do not move beyond the firing line for any reason until every gun has been unloaded and cleared, grounded / tabled or holstered, and the firing line has been declared "Cold" or "Safe" by all shooters on that firing line or by the RSO
- A member by them self, is not allowed to utilize more than a single firing point at a time, no matter how many guns your brought with you.

General Range Rules

- Unless you are shooting steel or skeet, all rifle and pistol rounds must pass through your target and hit the backstop berm behind it. You must know where your rounds are going at all times.
- The use of alcohol or drugs before or while shooting is prohibited.
- Know where others are at all times
- Designate a range officer when none is present, or assigned.
- When a range goes cold, you are required to step several feet away from your guns while people go down range.
- Always maintain proper target height and angles to ensure that all your rounds pass through the target, and hit the desired portion of the backstop berm.
- There are to be no bullet strikes to the ground in front of the backstop berms
- You can only use shotgun slugs when shooting Shotguns on the pistol or rifle ranges. Failure to comply with this rule will result in loss of privileges
- Incendiary or explosive targets are prohibited
- Climbing on berms or benches is prohibited
- Always obey MCWCC Range Safety Officers (RSO) and Instructors
- Store guns so they are not accessible to unauthorized persons.

Four Universal Laws of Gun Safety

- **Always keep the muzzle of your gun pointed in a safe direction**
- **Always keep your finger off the trigger, and on the frame of the gun until your ready to shoot**
- **Always know your target and what is beyond it**
- **Always treat every gun as if it was loaded**

Range Safety Expectations

Safety is everyone's responsibility! Members and their guests are expected to know, and practice safe gun handling skills at all times.

This means you should know the following :

- Know and follow the Four Universal Laws of Gun Safety
- Read and follow all posted “Range Rules” for the range your on. It is your responsibility to review the “Range Rules” with your guests.
- When in doubt, Read The Rules !

These are just some examples of the many “Range Rules” posted at MCWCC

RIFLE RANGE RULES

- Dawn till dusk Monday thru Saturday and center fire after 1:00 pm on Sunday
- EYE and EAR protection is required for everyone on the range
- All shooting must take place from behind a common firing line
- Keep guns pointed down range, finger off trigger until ready to shoot, and guns unloaded until ready to use
- Do not handle any firearms while personnel are forward of the firing line
- Do not move down range until all shooting has stopped, all guns are open, unloaded and muzzles pointed down range or holstered, and the range is declared safe
- All rounds must impact the berm backstop, allowing rounds to skip off the ground is prohibited
- Use appropriate paper targets, no steel targets on this range
- No shotguns on this range unless slugs are used
- Shooters under the age of 18 must be under the direct supervision of a member
- Clean up all targets and brass from the range when finished

PLATE RANGE RULES

- Dawn till dusk Monday thru Saturday and center fire after 1:00 pm on Sunday
- EYE and EAR protection is required at all times for all shooters on the range
- Steel will not be engaged closer than 10 yards
- Pistol ammunition only! No rifle, shotgun, armor piercing, incendiary

PISTOL RANGE RULES

- Dawn till dusk Monday thru Saturday and center fire after 1:00 pm on Sunday
- EYE and EAR protection is required for everyone on the range
- All shooting must take place from behind a common firing line
- Keep guns pointed down range, finger off trigger until ready to shoot, and guns unloaded until ready to use
- Do not handle any firearms while personnel are forward of the firing line
- Do not move down range until all shooting has stopped, all guns are open, unloaded and muzzles pointed down range or holstered, and the range is declared safe
- All rounds must impact the berm backstop, allowing rounds to skip off the ground is prohibited
- Do not shoot from behind the vertical poles of the overhead cover
- No shotguns on this range unless slugs are used
- Use appropriate paper targets, no steel targets on this range
- Shooters under the age of 18 must be under the direct supervision of a member
- Clean up all targets and brass from the range when finished

25 YARD RANGE RULES

- Dawn till dusk Monday thru Saturday and center fire after 1:00 pm on Sunday
- EYE and EAR protection is required for everyone on the range
- All shooting must take place from behind a common firing line
- Keep guns pointed down range, finger off trigger until ready to shoot, and guns unloaded until ready to use
- Do not handle any firearms while personnel are forward of the firing line
- Do not move down range until all shooting has stopped, all guns are open, unloaded and muzzles pointed down range or holstered, and the range is declared safe
- All rounds must impact the berm backstop, allowing rounds to skip off the ground is prohibited
- Do not shoot from behind the vertical poles of the overhead cover
- No shotguns on this range unless slugs are used
- Use appropriate paper targets, no steel targets on this range
- Shooters under the age of 18 must be under the direct supervision of a member
- Clean up all targets and brass from the range when finished

Long Gun Range

1. Observe basic Range Rules at ALL times.
2. All shooting must take place from behind a common firing line.
3. Place targets at least 4 inches below top of backer board.
4. Be aware of your angle of shooting and impact of rounds.
5. No shotguns unless slugs are used

Range Safety Rules

- All guns must be in cases or bags when transporting them to and from your vehicles
- You are not allowed to move between ranges carrying a gun in your hands.
- All bagged or cased guns being transported between ranges, or to and from your vehicle, must be unloaded and clear of any ammunition.



Range Safety Rules

- On the firing line, always place your gun case or bag so that the muzzle is always pointing down range. If your not sure, mark your case so you can always tell which way the muzzle is pointing when it is on the case.
- Removing guns from a case, bag, or from a holster will only be done on the firing line, and only when the firing line is hot. If the line is cold don't touch any guns.
- You must communicate with others on the firing line. Everyone must acknowledge and agree to have the line go Hot together.
- You are not allowed to put your guns back in their cases until the range goes hot. All bagging and casing will happen on the firing line, unless otherwise directed by an instructor or RSO.



Range Safety Rules

- Before a range can go cold, everyone on the range must
 - Remove all sources of ammunition from their guns
 - Open, clear and inspect all chambers
 - Verify all guns have been grounded or benched with their chambers opened, magazines removed, and muzzles pointing down range.
 - All shooters have stepped away from their firing points
 - All pistols that are going to be re-holstered, have to be cleared first on the firing line. After clearing the pistol the shooter performs a safety check before returning the gun to their holster. This means you let the slide go forward or close the cylinder, then taking aim at a target down range squeeze the trigger to validate the gun is empty and safe. The pistol is then returned to



Firearms WILL NOT be touched or manipulated while anyone is forward of the firing line

No guns are allowed to be touched, or manipulated in anyway while someone is forward of the firing line. Failure to follow this rule will result in loss of privileges.

Range Safety Rules



1. Never bend down on the firing line with a gun in your hand.
2. Never attempt to retrieve anything off the ground when the line is hot / active
3. A firing line cannot go cold unless all guns on the firing line have been unloaded and cleared, and then holstered/grounded or tabled by everyone on the line.
4. Only when the line goes cold, is it safe to retrieve items off the ground.

Range Safety Rules

“Cease Fire” is a safety command that applies to everyone on the range. Always remember that anyone on the range can call a Cease Fire. If you see something that is unsafe, call a Cease Fire so it can be addressed. It could save someone’s life.

If your on the firing line shooting and a “Cease Fire” is called

1. Immediately stop shooting, take your finger off the trigger and put it on the frame of your gun. Engage your manual safety, or decocker if your gun has one.
2. Keep your muzzle pointing down range. Do not turn around with a gun in your hands to see what is going on around you.
3. Await further instructions to either
 - A. **Return to your activity as the situation has been resolved -Or**
 - B. **Unload and make your gun completely safe before leaving the firing line to assist or carry out the instructions provided by whoever has taken charge of the range.**

Range Safety Rules

MCWCC RANGE ORIENTATION & SAFETY BRIEF

Beware of Squib Loads – A Squib load is a round that produces “Less than normal pressure” upon ignition. With reduced pressure, a Squib can cause a bullet to fail to exit the muzzle of the gun and get lodged in the bore. Failure to recognize a Squib load quickly, can lead to serious injury or death to the shooter and others around them.

Common Key Indicators of a Squib load

- Noticeable reduction in noise
- Noticeable reduction in recoil
- Noticeable reduction in muzzle flash

If you think you have a squib **Stop firing immediately! Keep you muzzle pointed in a safe direction, unload the gun, clear the action, once cleared use a cleaning rod or bore snake to check the barrel end to end. If you have a Squib, your cleaning rod or bore snake will stop before making it all the way through the barrel**



Examples of damage caused by “Failure To Catch” a Squib round

Know your Guns

You should always know what kind of action your gun has. Knowing your action will dictate how to safely load, unload, clear stoppages, and how to make your gun safe.



**Break Action
(Hinge Action)**



Single-Action Revolver



Double-Action Revolver



Semi-Automatic Pistols



Bolt Action



Lever action



Pump Action



Semi-Automatic Action



Hinge Action



Falling Block Action

Safe Gun Handling Skills

Safety is everyone's responsibility!

Before handling any gun we expect you to know how to safely operate it.

- Only shoot guns that you can safely operate and control
- Always make sure you have the correct ammunition for your gun
- Always make sure your gun is safe to operate before each and every use
- Know how to safely load and unload ammunition into the gun
- Always keep your finger out of the trigger guard and on the frame of your gun, when you are reloading, clearing stoppages, or anytime your handling a gun until your ready to shoot.
- Always make sure the muzzle of your gun is pointing in a safe direction at all times.



Safe Gun Handling Skills

- Know if your gun has safety features, and how to use those features.
- Please remember a mechanical safety is never a substitute for safe gun handling skills.

Here are a few examples of common pistol safety features

Manual Safety



Decocker



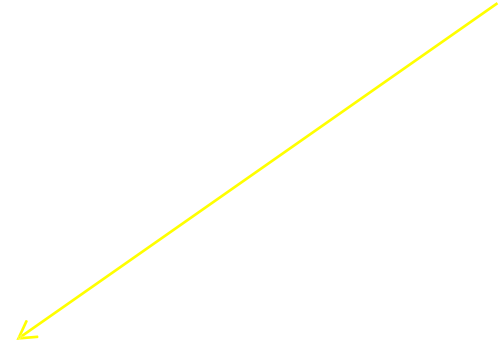
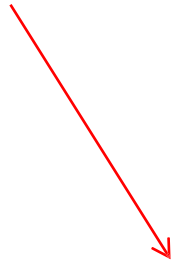
Action Safety



Grip Safety



Here is an example of the proper way to lay your Pistol down on a bench when the line has gone cold. Muzzle is facing downrange (towards the targets), magazine is removed, action is open, and ejection port/ cylinder is facing up so everyone can see the gun is empty.



Here is an example on the proper way to lay your rifle down on a bench when the line has gone cold. Muzzle is facing downrange (towards the targets), the internal magazine is empty, the bolt is back so everyone can see the chamber is empty.



Basic Range Etiquette

- Never uncase or case your gun behind shooters on the firing line.
- Never shoot another members target
- Never handle any other shooter's gun, ammunition and/or equipment without his or her permission
- Always take down your targets, pickup your brass, and put your trash in the cans
- Don't pick up another shooter's brass without their permission.
- Always watch you don't have muzzle creep and flag the firing line
- Make sure you stay aligned left and right with all the other shooters on the firing line. Nobody likes back seat shooter
- Don't engage in political or religious conversations with anyone at the range, especially someone you don't know.
- Don't have a "Garage Sale" at the range. In other words, keep all of your gear neat, clean and in one place. Don't have it spread out all over multiple firing points.
- Don't start giving everyone marksmanship advice. Unless someone is violating a major safety rule, keep shooting advice in check unless they ask for it.
- When the line goes cold, get up and walk several feet away from your gun
- Control your guests and kids at the range, don't allow people to run around like loonies, or play WWE wrestling time. The shooting range is not a place for that.

What Can Happen?

All MCWCC members are responsible for their actions, and the actions of their family members and guests. Claiming ignorance is not an acceptable excuse. When in doubt stop, and go back to the Four Universals Laws of Gun Safety, Read the posted Range Rules, ask an RSO or another club member on the range, or go back to the Range Safety Brief and Orientation. If you still don't know what to do, then call one of the Board Members of the club. Their contact information is posted on our website at www.mcwcc.org

Negligent discharges, damage to club property, failure to obey all posted range rules, RSOs, Instructors, or BoD members, whether intentional or accidental will result in appearance before the MCWCC board which can result in club Membership suspension or revocation.

Negligent actions or discharges can lead to serious injury, death, or property damage, All of which are subject to prosecution in Criminal or Civil court.

Safety Rules For The Range

Unsafe Actions At The Range

- If you see someone destroying club property contact the Board of Directors, or tell a Range Safety Officer if one is present. The contact information for all Board Members is located on our website www.mcwcc.org under Contacts
- If possible, use your cell phone to document the event with pictures or video
- Take note of the time, description of offender's vehicle or license plate number . If possible get the person's member number or name off their ID card
- Do not get into an argument, if the person is belligerent then just walk away
- If you are caught destroying club property you will be held liable for all damages you caused. Your Membership will be immediately suspended until you appear before the Board of Directors. Failure to comply will result in your membership being permanently rescinded.

Safety Rules For The Range

In Case Of An Emergency

- Please make sure your guests know the name and address of our facility, and the name of the range you are going to be shooting on. Remember they might have to call 911 for you or another member.
- Always check your phones signal strength and battery level before starting any shooting session.
- Always do a safety brief before any shooting session with non members and guests
- Always let your guests know there is an Emergency phone inside the red ammo box at the 100 yard range. It is attached to the outside of the Target shed. Instructions on how to use the phone are displayed next to it as seen below.
- First responders have both automated, and manual gate access to get into our facility.
- If there is a medical emergency call 911, then instruct someone to make sure a cease fire is called on every range. Instruct all people to clear and secure all guns as quickly as possible. First responders need to be sure all guns are safe and secure before they will step onto any range.
- Never render aid beyond your training and abilities.



Safety Rules for Shooting Steel Targets

25 / 50 Yard Range Orientation



100 Yard Range Orientation



25 Yard Range Orientation



Range Orientation



15 yard and 7 yard ranges

Pistol Steel Plate Range Orientation



Eye protection is required for shooters, their guests and spectators at all times. If anyone approaches the range without eye protection, ask them to get eye protection on immediately. The shooter must not continue to shoot until everyone on the range has proper eye protection.

Instructional/Action Pistol Range Orientation



General Range Rules for the Shotgun Range

- All shooting must take place at the designated firing points
- Instruction on how to use the clay throwers are located on the equipment
- Always de-cock and cover the clay throwers when finished
- No shotgun slugs, no buckshot or birdshot larger than #8 are allowed on the shotgun range
- There is no shooting of any type of metal targets on the shotgun range
- Clean up all spent shells when finished

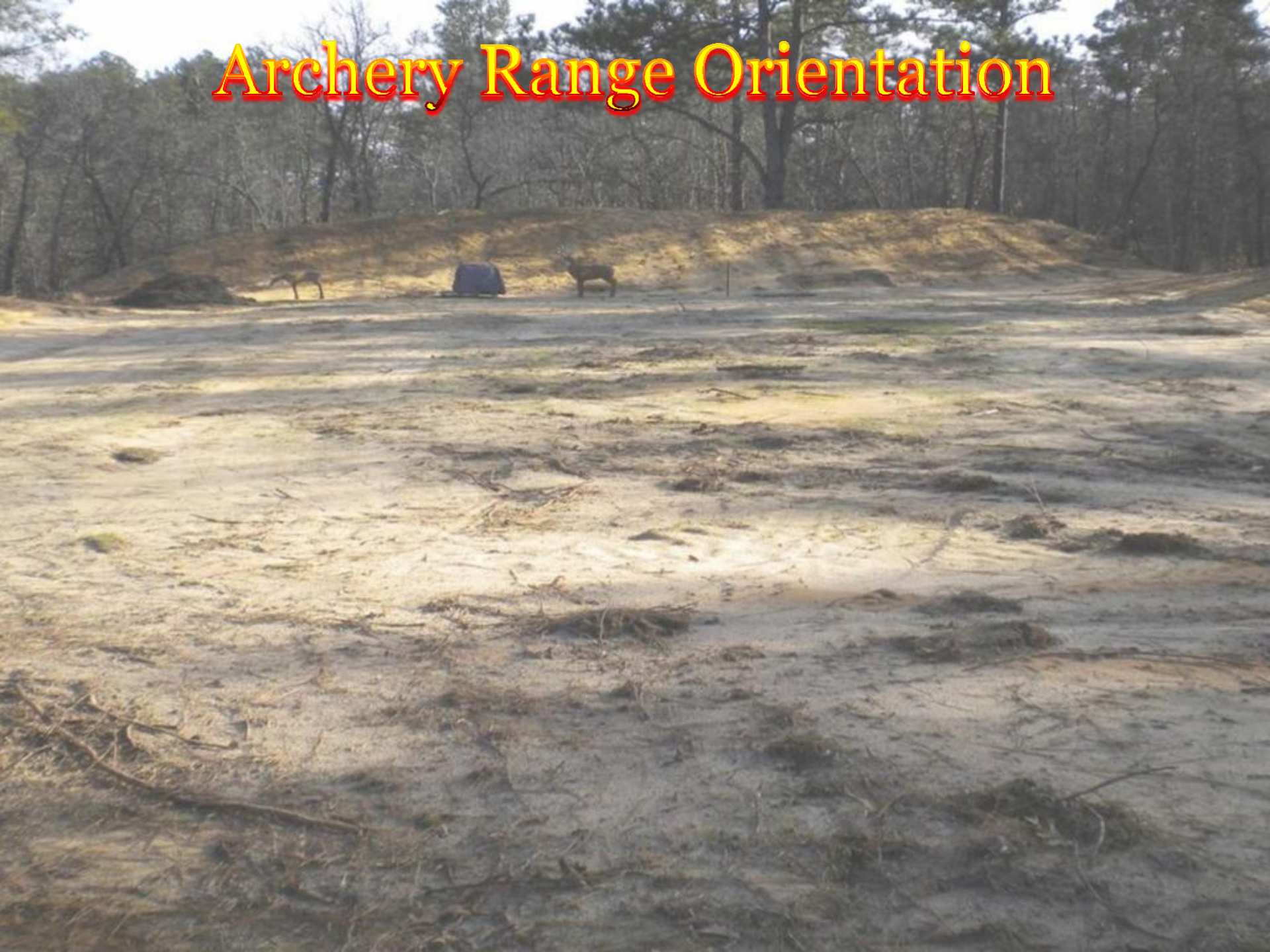
Shotgun Range Orientation



General Range Rules for the Archery Range

- Dawn till dusk Monday thru Sunday
- Field/target points only, no broadhead arrows on MCWCC targets
- Archers may use broadheads on any of their own personal targets
- There is a maximum limit of four Archers on the range at a time
- All archery must take place from a common firing line
- All targets must be set between the Zero distance, and the berm
- Keep arrows pointed in a safe direction when your on the firing line
- All arrows must impact the berm, or your target.
- Do not move forward of the archery line, until the range has been declared safe
- Clean up the range when your finished

Archery Range Orientation



Safety Rules for Shooting Steel Targets



Minimum Safe
Distance - Rifle

Minimum Safe
Distance - Pistol

Safety Rules for Shooting Steel Targets

- ❑ Never use steel targets for purposes outside their scope of design.
- ❑ Shooters must ensure all spectators on the steel range are wearing eye and ear protection before you can shoot. All spectators must remain several feet behind the shooters.
- ❑ It is recommended that you wear a hat with a brim large enough to protect the front of the head and face when shooting steel. Don't shoot steel in shorts and T-shirts or low cut tops. **Splatter and spall from steel is real!**
- ❑ Never use steel shot, pellets, BB's, or other air gun projectiles on MCWCC Steel
- ❑ Shooters are allowed to shoot Shotgun slugs, but only on the rifle range steel as long as the shooter maintains the 100 yard minimum safe distance.
- ❑ **Shooters are not allowed to shoot any shotguns on the pistol steel range, no exceptions!**

Safety Rules for Shooting Steel Targets

- ❑ All shooters must wear hearing protection, and wrap-around eye protection at all times when shooting steel. Detachable side shields are acceptable as well
 - ❖ It is recommended that your eye protection meet or exceed one of the following standards: ANSI Z87.1 , Mil-PRF-31013
- ❑ Each shooter must inspect each steel target they are shooting, for any pitting damage, deformity, cracks, loose, broken, or missing bolts / pins prior to use.
- ❑ Never shoot at any steel targets that show signs of pitting, damage, deformities or cracks in any way.
 - ❖ Disregarding this safety rule could result in serious injury or death to the shooter, or others around the range.
- ❑ All shooters must maintain a minimum safe distance of 10 yards when shooting steel on the pistol plate range with an approved handgun caliber and ammunition. Please reference the approved ammunition details section labeled “Pistol Steel Plate Range - Approved Ammunition” to check your ammunition for compliance.

Safety Rules for Shooting Steel Targets

- ❑ All shooters must maintain a minimum safe distance of 100 yards when shooting steel on the rifle range with an approved rifle caliber and ammunition. Please reference the approved ammunition details section labeled “Rifle Range Steel Plates – Approved Ammunition” to check your ammunition for compliance.
- ❑ All armor-piercing, steel-core, or other hardened ammunition like green tips are forbidden to be used on any MCWCC steel targets. These types of ammunition will damage the steel plates. Use of these types of ammo on MCWCC steel will result in loss of membership and legal actions for the damages caused.
- ❑ All shooters are to only shoot at their steel targets. You are not allowed to engage steel targets in another shooting lane.
- ❑ Members are allowed to shoot pistol ammunition on the Rifle Steel Range as long as the 100 yard minimum safe distance is maintained.
- ❑ Shooters are not allowed to shoot any rifles, or rifle pistol hybrids on the Pistol steel range, no exceptions!

Damaged Steel Leads To Dangerous Situations



Standard splatter pattern with a flat steel surface

Danger of shooting pitted or damaged Steel

Damaged Steel Leads To Dangerous Situations

All ammunition is not the same, popular calibers can have varying muzzle velocities from manufacturer to manufacturer. Different barrel lengths and ammunition types can drastically change a bullet's velocity as well. You should know what your ammunition velocity is at the muzzle exit, for each firearm you're shooting with the ammo you're shooting.

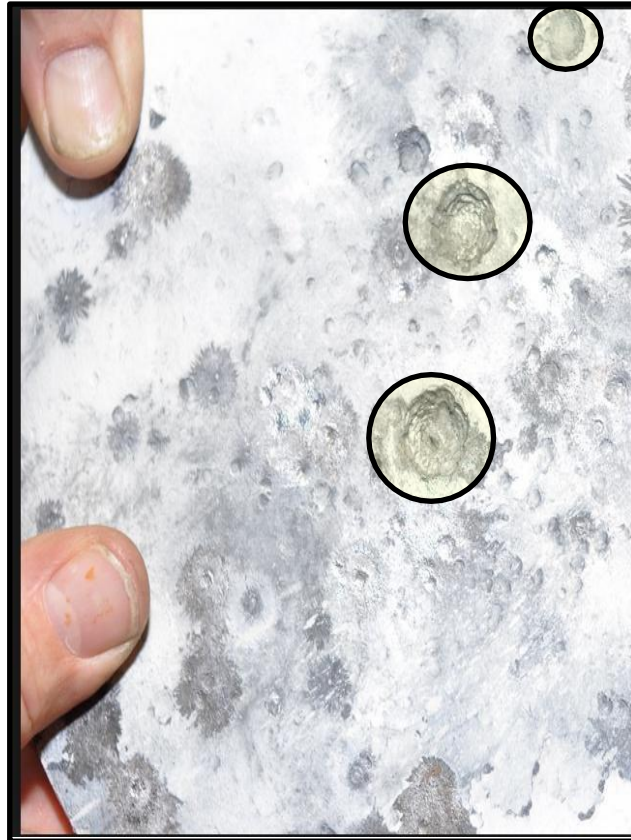
Excessive concentrated heat can alter a piece of steel's hardness properties and result in damage to the steel target's surface. The amount of heat generated is proportional to the speed of a bullet. Don't assume a lighter bullet is safer. Remember that lighter bullets can mean greater speed, which means more heat on impact which can result in damage to the steel target.

Members are not allowed to shoot club steel with reloaded ammo unless the ammo has been chronographed before using it. Shooters need to be sure their reloads will not damage the plates leading to safety hazards. It's not worth the risk of potentially hurting yourself or others.

Damages Caused By Prohibited Ammo & Calibers



Steel target shot through



Steel target pitted

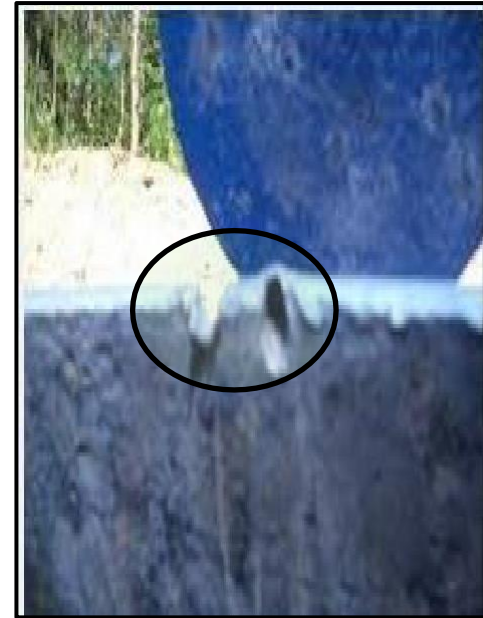


Plate rack stand damage

Ammunition Velocity Limitations

- ❑ Maximum ammunition velocity for shooting Steel on the Pistol Plate Range is 1,500 fps
- ❑ Desirable pistol rounds that produce consistent splatter are jacketed hollow-points or soft point rounds.
- ❑ Maximum ammunition velocity for shooting the Steel targets on the Rifle Range is 3,000 fps
- ❑ Desirable rifle rounds that produce consistent splatter are jacketed hollow-point or soft point rounds.
- ❑ Frangible ammunition is not recommended to be used unless it has been chronographed, Frangible rounds can easily exceed 3,000 fps and pit steel.
- ❑ Shooting shotgun slugs at damaged steel greatly increases the risk for bodily harm, because of the total volume of lead that can be returned from the damaged steel.

Pistol Steel Plate Range - Approved Ammunition

The following list are all of the approved calibers that are allowed to be used on the Pistol Steel Plate Range:

- ❑ 22 LR, 9mm, .380, .32, .38.Spl .40 SW, .45acp You must be at a minimum safe distance of 10 yards and a recommended safe distance of 25 yards for these calibers. The Plate range has distance markers on the tie walls for 10, 15, 20, and 25 yards. No shooter is allowed to shoot further than 25 yards or engage steel at less than 10 yards.

The following list of calibers and ammunition are **Not To Be Used** on the Steel Pistol Plate Range.

- ❑ .22 Mag, .357 mag, .38 +P, 38 Super, .45 Colt, .44 Spl, .44 mag, 10mm, .50 Cal
All of these calibers have a 50 - 100 yard recommended minimum safe distance to shoot our type of AR 500 steel without risk of damaging the plates.
- ❑ You are not allowed to shoot any Rifle / Pistol Hybrids like AR Pistols that shoot .223, or 5.56 on the Pistol Steel plate range.
- ❑ No +P+ rounds , Foreign / Exotic ammo, or Magnums
- ❑ No Steel, Steel core, Green tip, Brown Tip, Bi-metal, Armor piercing or any other hardened ammunition, and no tracers or white phosphorus type rounds.
- ❑ Never shoot any ammunition that has a velocity below 750 feet per second at steel. Low velocity projectiles lack sufficient speed and power to collapse the round when they strike the steel plate.

Rifle Range Steel Plates - Approved Ammunition

The following list are all of the approved calibers that are allowed to be used on the Rifle Range Steel Plates.

- ❑ Any Pistol Ammunition
- ❑ .22 Mag, .223, 5.56mm, 6.5 Grendel, 6.8 SPC, 5.7x28
- ❑ .308/ 7.62x54, .30-30, 7.62x39, 243, .45-70, .204 Ruger
- ❑ Shotgun Lead Slugs only

The following list are all of the calibers that are **Not To Be Used** on the Rifle Range Steel Plates.

- ❑ .308 LR, .30-06, .270 Win, 22-250, 300 Win Mag, .300 Norma, .338 , .50 BMG. *All of these calibers have a 200+ yard recommended minimum safe distance to shoot our type of AR 500 steel without risk of damaging the plates.*
- ❑ XM 193, Steel core, Green tip, Bi-metal, Armor piercing or any other hardened ammunition , no Tracers or white phosphorus.
- ❑ Never shoot any ammunition that has a velocity below 750 feet per second. These types of Projectiles lack sufficient velocity to collapse when they strike the steel plate.

Remember - Safety First!

- If your not sure, Stop and ask someone
- If you see something unsafe, call a “Cease Fire” and address it
- If you see someone is repeatedly being unsafe, tell a Range Safety Officer, or a Board Member immediately
- Safety is everyone’s responsibility



THINK SAFE
ACT SAFE
BE SAFE

MCWCC Safety Exam!

- All new applicants are required to take and pass the MCWCC Safety exam. This must be done before submitting your membership application for consideration.
- All existing members are required to retake and pass the safety exam annually. The test must be taken and passed before submitting your membership renewal form
- You need a score of 90% or higher to pass the exam. The exam is an “Open Book” exam, this means you can download a copy of the Safety Brief and reference it during the exam. You may take the exam as many times as needed until you pass.
- You can take the exam by going to our website at www.mcwcc.org and clicking on the “Safety First” tab, then go to the bottom of the Safety First page and click on the button “Safety Exam” to get started. You can also go directly to the exam using the following Url <https://www.brainsbuilder.com/quizlogin.html>

Assessment ID:

Testme2018

Assessment Password:

Kimb3r#45